



SHRIVASANTRAOBANDUJIPATILTRUST'S

**APPASAHEB BIRNALE COLLEGE OF
ARCHITECTURE, SANGLI**

(Approved by AICTE, C.O. A New Delhi, Affiliated to Shivaji University Kolhapur)
District – Sangli 416416

Criterion-VI

Key Indicator – 6.1.1

The Effective leadership is visible in various institutional practices such as decentralisation and participative management.



SHRI VASANTRAO BANDUJI PATIL TRUST'S

**APPASAHEB BIRNALE COLLEGE OF
ARCHITECTURE, SANGLI**

(Approved by AICTE, C.O.A New Delhi, Affiliated to Shivaji University Kolhapur)
District – Sangli 416416

VISION

As Architecture and Planning is the backbone of built environment. Our institute is committed to develop the students with diverse perspective and ideas which generate sustainable architecture concepts and innovations that led towards the sustainability on the planet earth.

MISSION

To strive for quality architecture education by enhancing and preserving the ethical values of life and profession among the students. Our focus is to develop the concept of UASI – Understanding Analysis Synthetization & Innovation which is the base of a quality education creates the strong pillar of education. Such concept of education leads towards the development of sensitivity and responsibility of the society.

Vision and Mission are displayed at all the prominent places. These are also communicated to the students, faculty members, administrative staff and the other stakeholders.



**VC. PRINCIPAL,
APPASAHEB BIRNALE COLLEGE
OF ARCHITECTURE, SANGLI.**

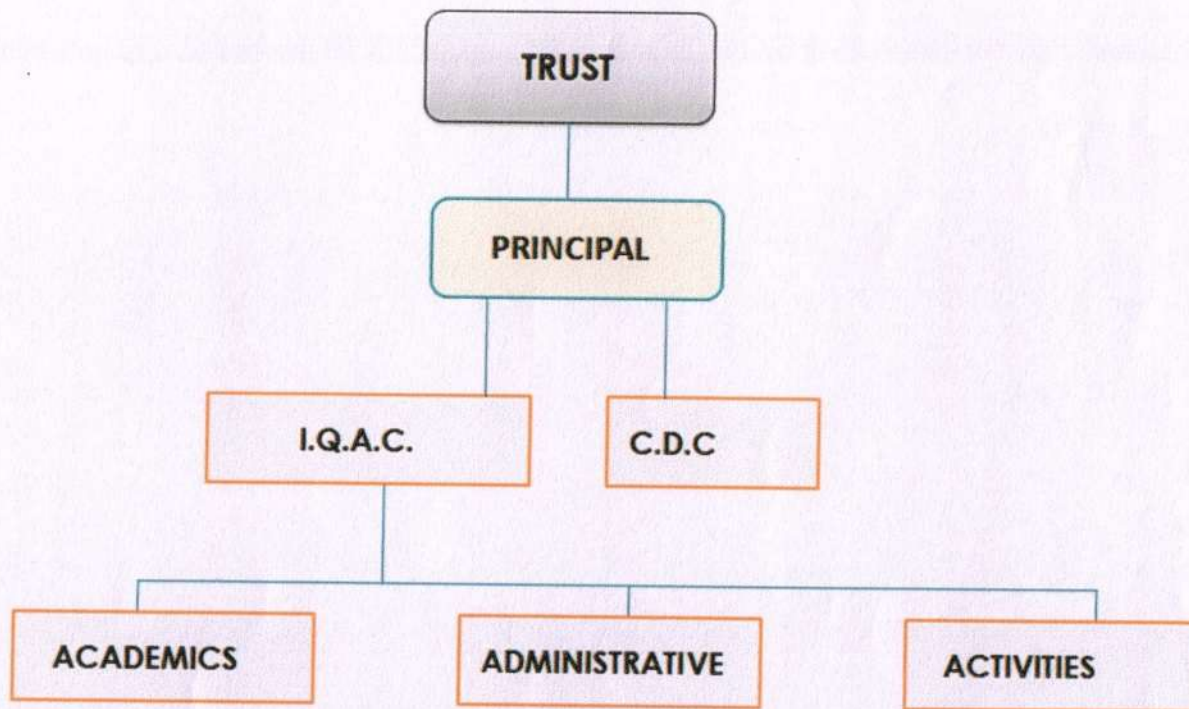
6.1.1 The effective leadership is visible in various institutional practices such as decentralization and participative management.

ORGANOGRAM

The Organogram, includes: -

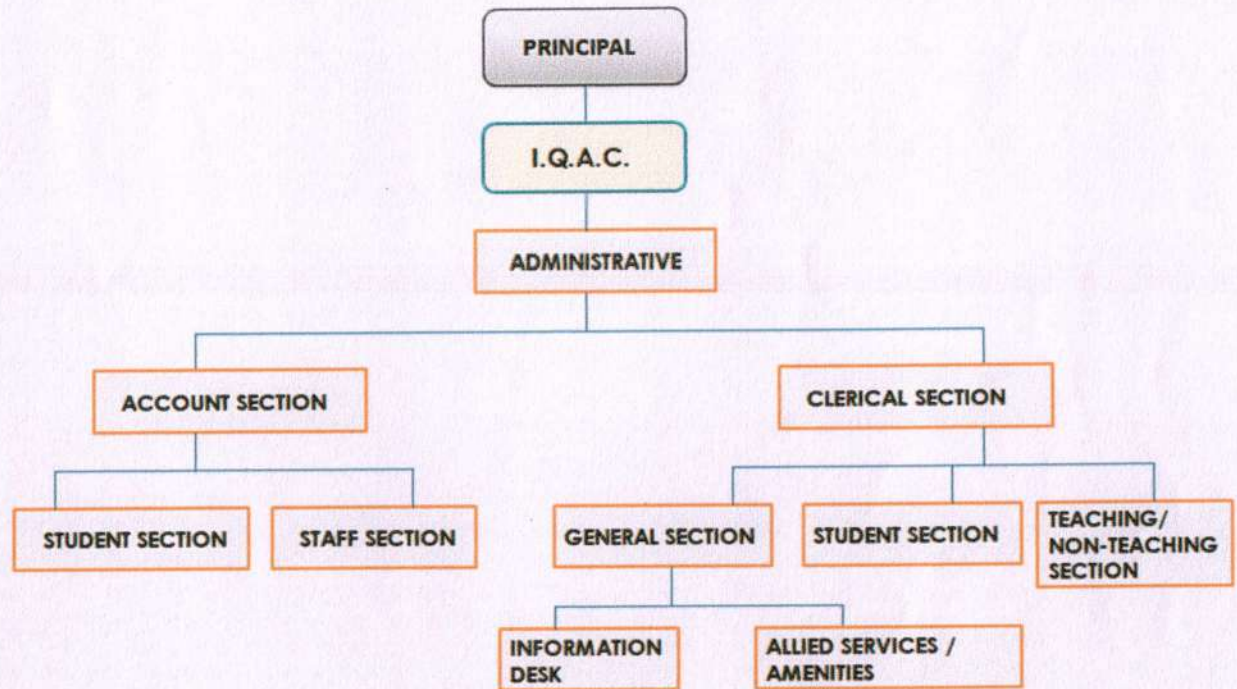
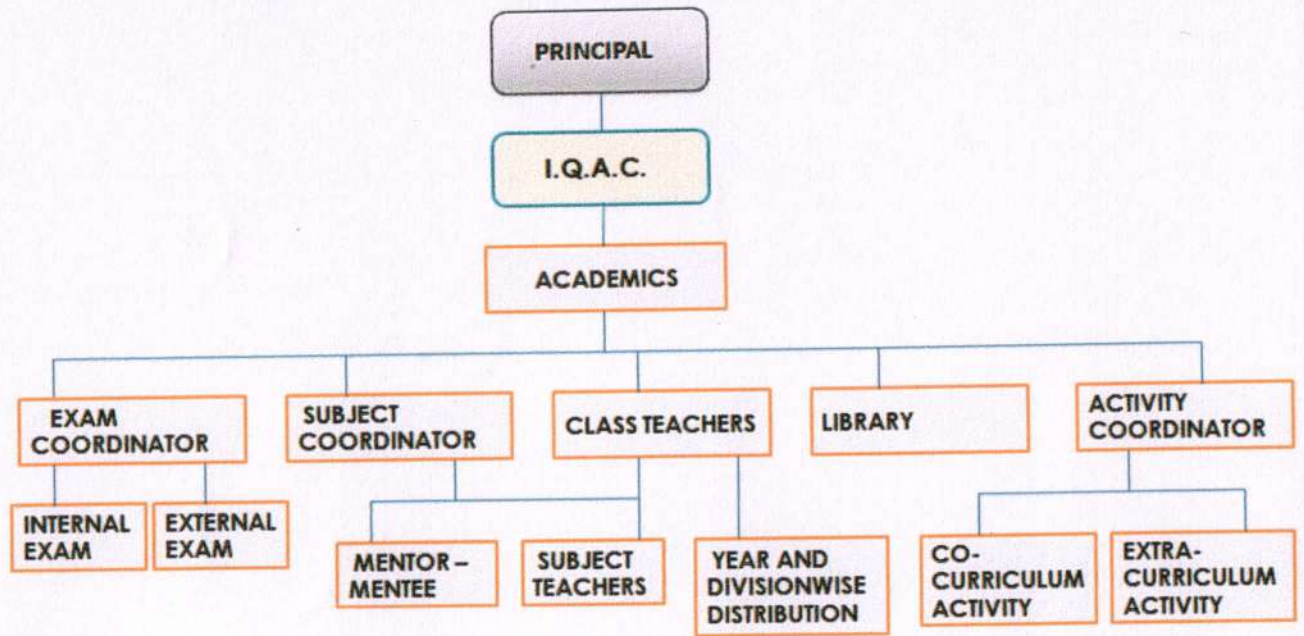
- 1- Top management – principal / dean
- 2- Departmental / divisions - academic administration (vice principal, head of departments)
- 3- Middle management – Faculty (Professors, Associate professors, lecturers)
- 4- Supervisory / team leaders - support staff (Registrar, administrative staff, librarian)
- 5- Staff / team members – Student body (Student council, students)
- 6- Support functions – External relations (Industry liaison officer, Alumini relation)
- 7- Advisory / support boards – Advisory board (guidance, counseling)

ORGANOGRAM OF THE COLLEGE



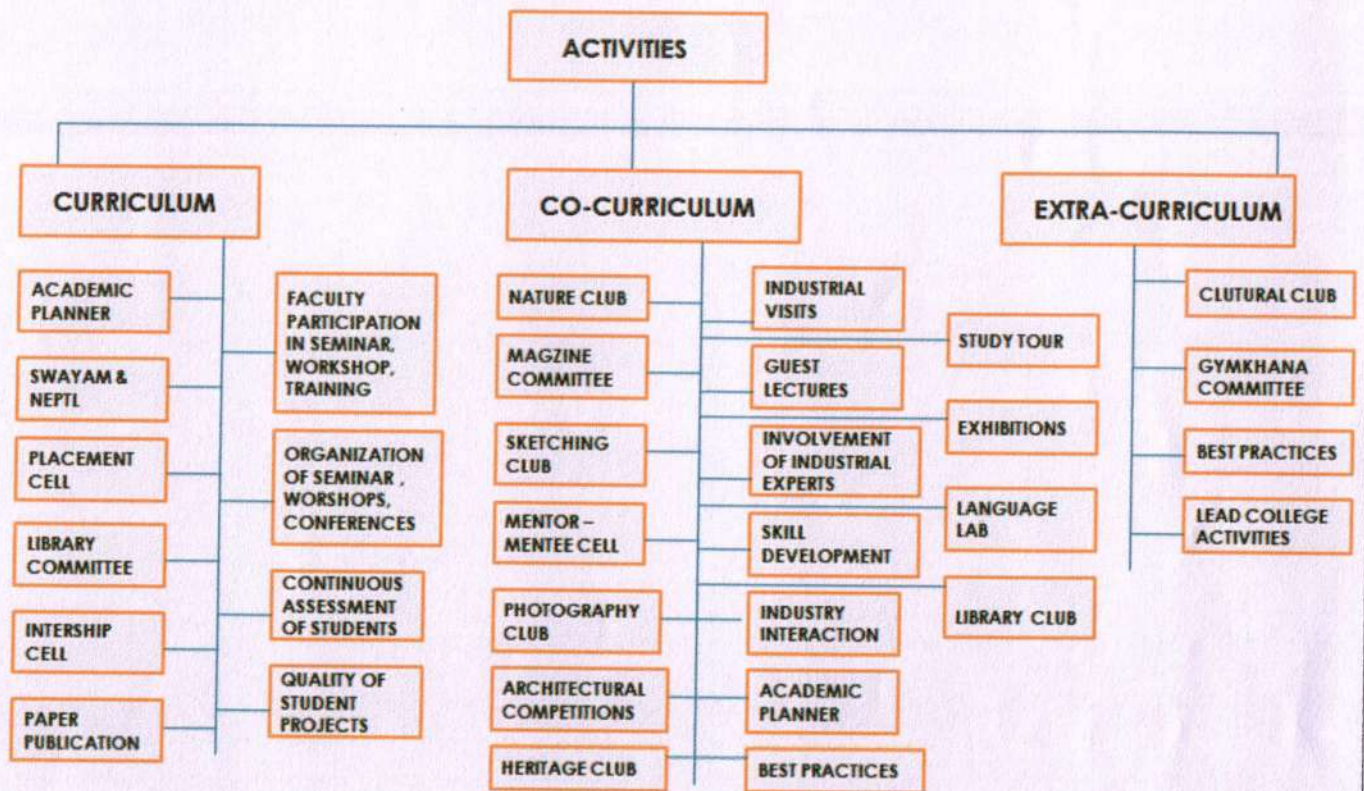
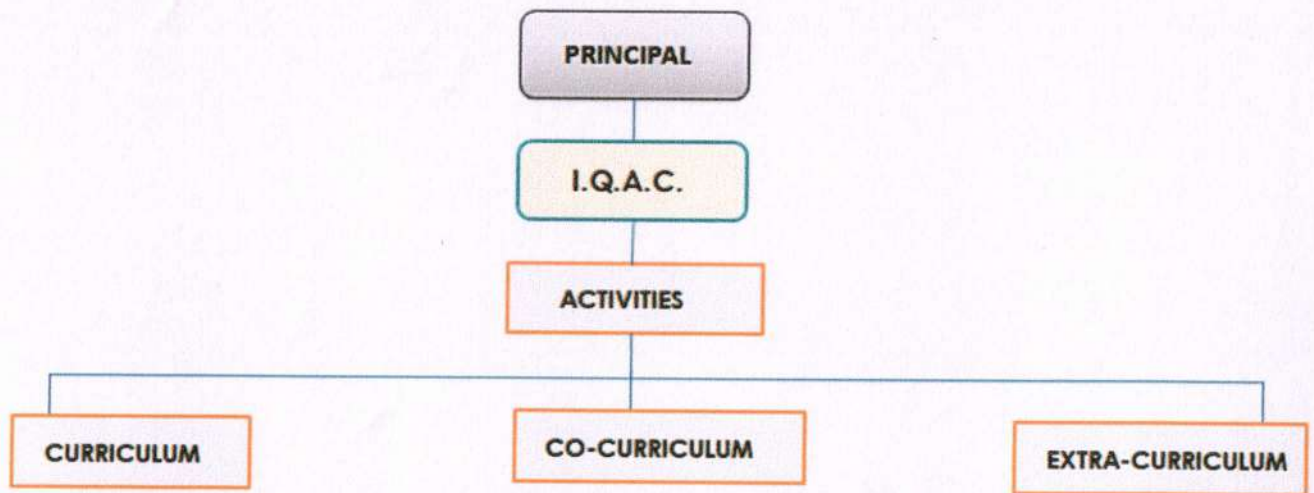
M. Patil
I/C. PRINCIPAL
APPASAHEB BIRNALE COLLEGE
OF ARCHITECTURE, SANGLI.





Appasaheb Birnale

I/C. PRINCIPAL
 APPASAHEB BIRNALE COLLEGE
 OF ARCHITECTURE, SANGLI.



Amatignil
 I/C. PRINCIPAL 4
 APPASAHEB BIRNALE COLLEGE
 OF ARCHITECTURE, SANGLI.