

SHRIVASANTRAOBANDUJIPATILTRUST'S

**APPASAHEB BIRNALE COLLEGE OF
ARCHITECTURE, SANGLI**

(Approved by AICTE, C.O. A New Delhi, Affiliated to Shivaji University Kolhapur)

District – Sangli 416416

Criterion IV

Key Indicator – 4.1.1

Infrastructure and physical facilities for teaching- learning.

The Institution has adequate infrastructure and physical facilities for teaching- learning. viz., classrooms, laboratories, computing equipment etc.

Appasaheb Birnale College of Architecture, Sangli, meets the minimum standards as per the Council of Architecture norms for infrastructure and physical facilities for teaching and learning, ensuring a conducive environment for academic excellence.

Classrooms:

The college has well-ventilated and spacious 11-number studios 7-classroom 1-seminar hall equipped with modern furniture and audiovisual aids, providing an ideal setting for interactive learning. Each classroom adheres to the space requirements set by statutory bodies, ensuring comfort and effective teaching.

Laboratories:

The institution houses a specialized climatology lab, Surveying lab, material museum and construction yard- for various disciplines, including architectural design, materials, and construction. These labs are equipped with up-to-date tools and resources to support practical learning. The space and equipment meet the minimum standards as per the Council of Architecture norms prescribed by regulatory authorities, ensuring students gain hands-on experience.

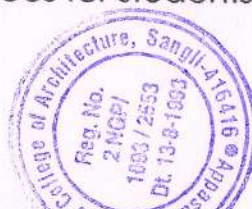
Computing Facilities:

The college has a computer lab featuring the latest 40+10-number computers, including high-performance desktops, software for architectural design, and CAD tools. The facility is accessible to all students and supports their academic and research activities. The student-to-computer ratio aligns with statutory body requirements, providing adequate resources for digital learning and research. the whole administration is computerised for computing. as well as each faculty has a computer and printing facility

Library and Reading Areas:

The library is well-stocked with many academic books, journals, and digital resources, promoting self-learning. It offers comfortable reading spaces for students to engage with study materials. The library is one of the biggest libraries, which has aWIFI system online and an OPAC system for the library

These facilities comply with regulatory standards and ensure effective teaching and learning experiences for students.




I/C. PRINCIPAL
APPASAHEB BIRNALE COLLEGE
OF ARCHITECTURE SANGLI



SHRI VASANTRAO BANDUJI PATIL TRUST'S

**APPASAHEB BIRNALE COLLEGE OF
ARCHITECTURE, SANGLI**

(Approved by AICTE, C.O.A New Delhi, Affiliated to Shivaji University Kolhapur)
District – Sangli 416416

Criterion IV

KEY INDICATOR – 4.1.1.

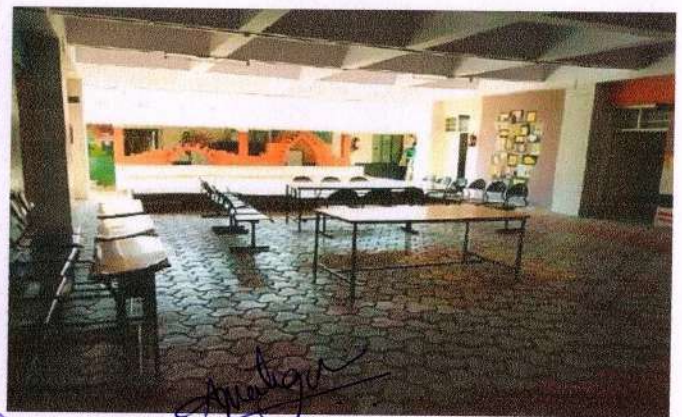
**INFRASTRUCTURE AND PHYSICAL
FACILITIES FOR TEACHING- LEARNING.**

Infrastructure and Physical Facilities

Photos of campus, Academic spaces,

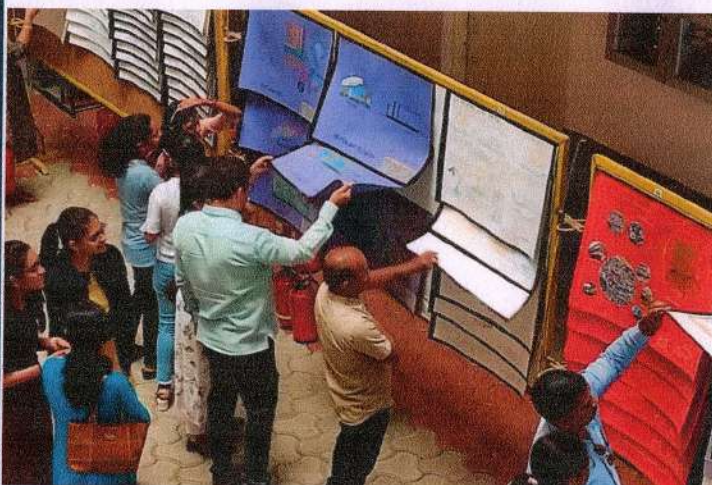
CAMPUS:

**COURTYARD ALONG PERMANENT EXHIBITION AREA,
STUDENTS ACTIVITY AREA, AND MULTIPURPOSE SPACE.**



Appasaheb
**I/C. PRINCIPAL
APPASAHEB BIRNALE COLLEGE
OF ARCHITECTURE, SANGLI**

EXHIBITION AREA.



Pratigya

I/C. PRINCIPAL
APPASAHEB BIRNALE COLLEGE
OF ARCHITECTURE, SANGLI

PRINCIPAL DIRECTOR CABIN



Principal Cabin

Director Cabin



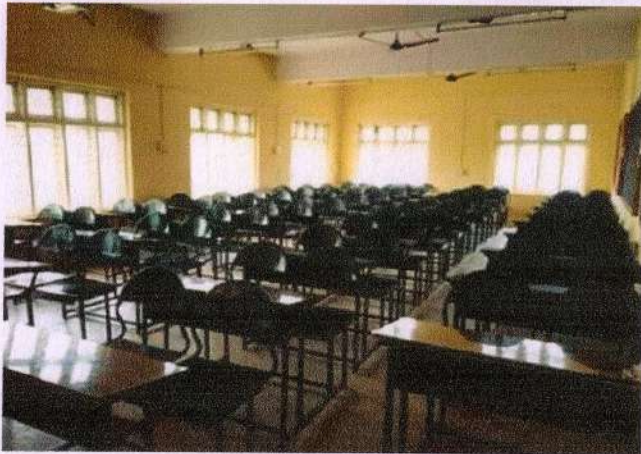
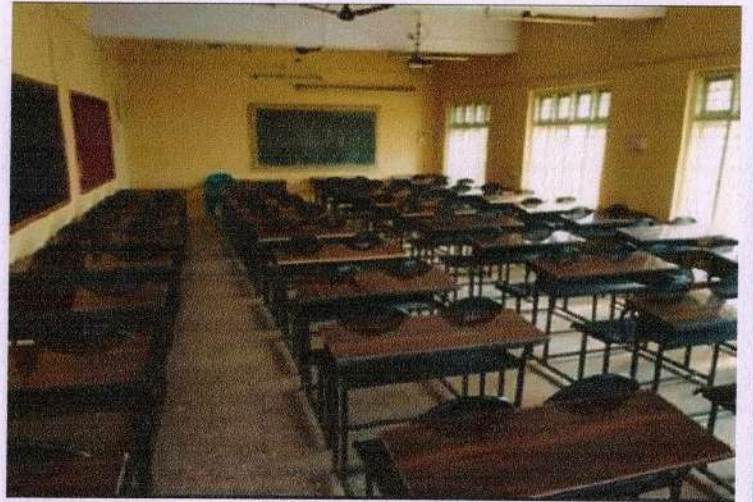
Pratya
**I/C. PRINCIPAL
APPASAHEB BIRNALE COLLEGE
OF ARCHITECTURE, SANGLI**

CONSTRUCTION YARD



Pratya
I/C. PRINCIPAL
APPASAHEB BIRNALE COLLEGE
OF ARCHITECTURE, SANGLI.

LECTURE ROOMS

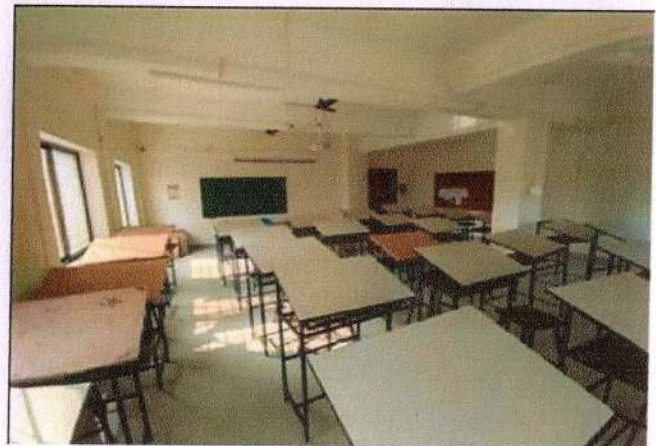
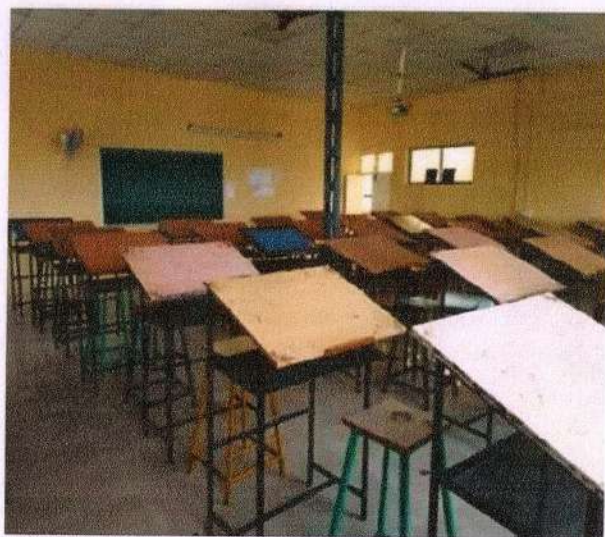


Amalga

I/C. PRINCIPAL

APPASAHEB BIRNALE COLLEGE

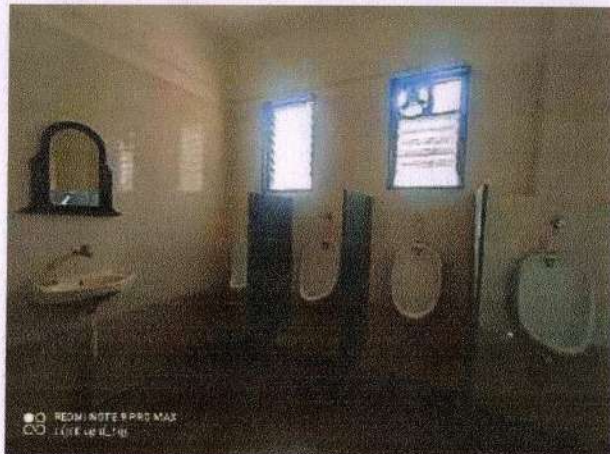
CLASSROOM WITH LCD FACILITIES



Pratya

I/C. PRINCIPAL
APPASAHEB BIRNALE COLLEGE
OF ARCHITECTURE, SANGLI

BOY'S AND GIRL'S TOILET



Pratya
I/C. PRINCIPAL
APPASAHEB BIRNALE COLLEGE
OF ARCHITECTURE, SANGLI.

BOY'S COMMON ROOM



Amation
I/C. PRINCIPAL
APPASAHEB BIRNALE COLLEGE
OF ARCHITECTURE, SANGLI

GIRL / LADIES COMMON ROOM



Appasaheb

I/C. PRINCIPAL
APPASAHEB BIRNALE COLLEGE
OF ARCHITECTURE, SANGLI

FACULTY ROOMS



Amtey
I/C. PRINCIPAL
APPASAHEB BIRNALE COLLEGE
OF ARCHITECTURE, SANGLI

FACULTY ROOMS



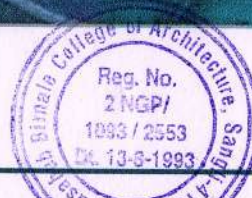
Aruty
I/C. PRINCIPAL
APPASAHEB BIRNALE COLLEGE
OF ARCHITECTURE, SANGLI

LIBRARY SPACE



Amatya
I/C. PRINCIPAL
APPASAHEB BIRNALE COLLEGE
OF ARCHITECTURE, SANGLI

COMPUTER LAB



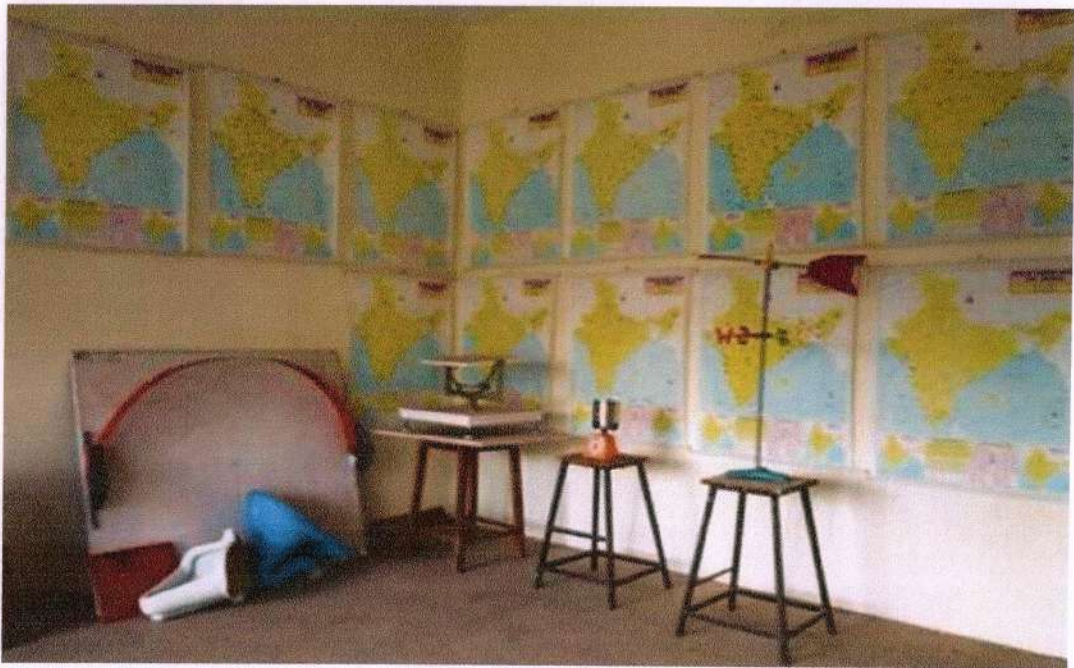
Amaty
I/C. PRINCIPAL
APPASAHEB BIRNALE COLLEGE
OF ARCHITECTURE, SANGLI.

MATERIAL LAB



Appasaheb Birnale
I/C. PRINCIPAL
APPASAHEB BIRNALE COLLEGE
OF ARCHITECTURE, SANGLI.

CLIMATOLOGY LAB



Amaty
I/C. PRINCIPAL
APPASAHEB BIRNALE COLLEGE
OF ARCHITECTURE, SANGLI

SURVEYING LAB :



Praty...

**I/C. PRINCIPAL
APPASAHEB BIRNALE COLLEGE
OF ARCHITECTURE, SANGLI.**

ELECTRIC LAB :



Amaty

**I/C. PRINCIPAL
APPASAHEB BIRNALE COLLEGE
OF ARCHITECTURE, SANGLI**



Amulya
I/C. PRINCIPAL
APPASAHEB BIRNALE COLLEGE
OF ARCHITECTURE, SANGLI.



PARKING



Amey

**I/C. PRINCIPAL
APPASAHEB BIRNALE COLLEGE
OF ARCHITECTURE, SANGLI.**

YOGA FACILITIES:



Amtey

**I/C. PRINCIPAL
APPASAHEB BIRNALE COLLEGE
OF ARCHITECTURE, SANGLI,**

CENTER COURTYARD

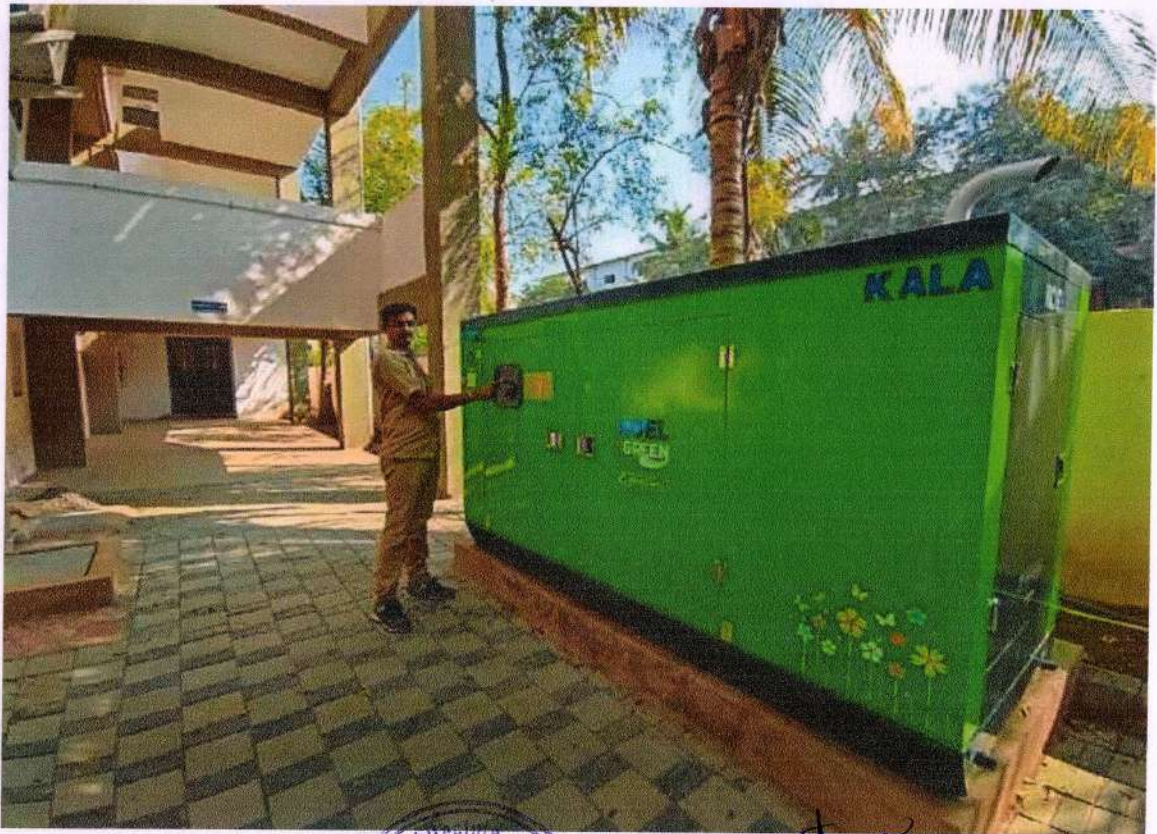


Principle
I/C. PRINCIPAL
APPASAHEB BIRNALE COLLEGE
OF ARCHITECTURE, SANGLI



COMPOSTING TANK:

GENERATOR SET:



Matyee
I/C. PRINCIPAL
APPASAHEB BIRNALE COLLEGE
OF ARCHITECTURE, SANGLI